

COMMUNITY HAS AN ADDRESS

WE FIRST ENVISIONED CENTERRA NEARLY THREE DECADES AGO. AND AS THE COMMUNITY HAS GROWN, SO HAVE WE. BY REVITALIZING DENVER'S ICONIC UNION STATION, CREATING THE DAIRY BLOCK IN LODO AND LAUNCHING BASELINE IN BROOMFIELD, WE'VE LEARNED A LOT. AND WITH THE NEW VILLAGES EMERGING IN CENTERRA, YOU COULD SAY WE'RE BRINGING ALL THOSE LESSONS HOME.



KINSTONCENTERRA.COM | INFO@KINSTONCENTERRA.COM
KINSTON HUB & HUB CAFÉ: 6402 UNION CREEK DRIVE, LOVELAND, CO 80538
FOR HOURS AND DIRECTIONS, VISIT OUR WEBSITE



CENTERRA



We've re-thought of everything

Welcome to Kinston Centerra. A new home community in Loveland, Colorado - based on some simple yet enduring ideas about place. Like walking beats driving. A town needs a center. Neighborhoods need parks. Front porches are for conversation. Art is for everyone, and nature is an important part of life.

**KINSTON IS A WHOLE NEW SIDE OF CENTERRA.
WE INVITE YOU TO JOIN US.**



AT KINSTON, EVERYTHING IS GIVEN AN

ARTFUL TOUCH — FROM THE VARIETY

AND ARCHITECTURAL CHARACTER

OF THE HOMES TO THE SCULPTED

LANDSCAPES AND INSPIRED PUBLIC

ART — IN A COMMUNITY DESIGNED TO

BRING PEOPLE TOGETHER.



Magik Studios

Mural artists, Meredith Steele and Kristen Fogarty of Magik Studios, make big things happen. Often found singing and dancing while they work, they collaborate to turn empty spaces into creative atmospheres, with imaginative concepts that complement their surroundings.

YOU'LL FIND MAGIK STUDIOS' WORK AS THE FEATURED MURAL ON THE OUTSIDE OF THE HUB.

Eric Valat

Artist Eric Valat's seated black bear, nose to the sky, seems to be curious about the world around it. Its arms and lap form a chair, inviting the viewer to join it. This is just one of the whimsical creations by the French sculptor who works with fluid lines and vibrant colors to create large, stylized animals.

YOU'LL FIND ERIC'S SCULPTURE AT KINSTON COMMONS.



Mark Chatterley

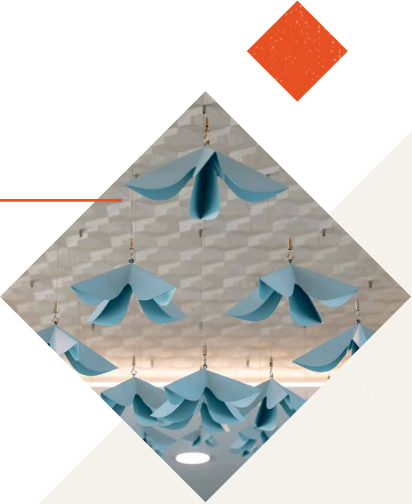
Sculptor Mark Chatterley finds beauty in the malformed. His work reflects a sense of decay along with life, at once a nod to past, present and future. His contemporary creations express the ever-changing nature of things — the impermanence of our world and all that is in it.

YOU'LL FIND MARK'S WORK ON A CATWALK IN THE COMMUNITY GATHERING SPACE OF THE HUB.

Jennifer Ghormley

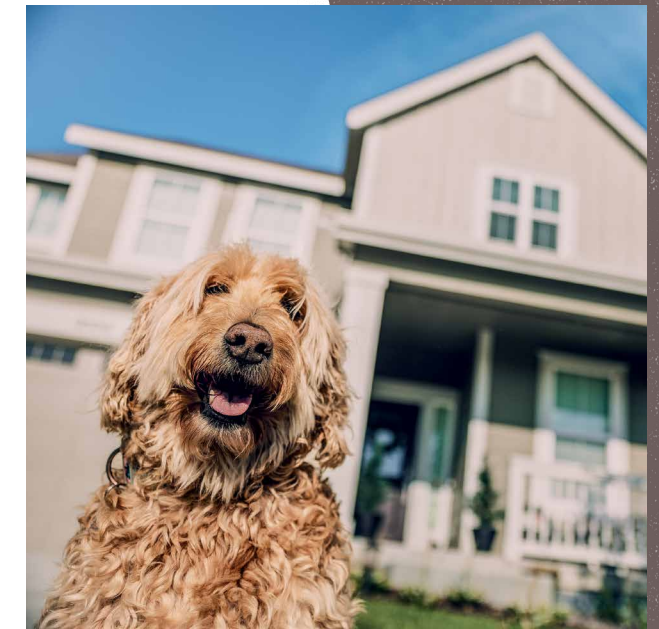
Among the creations of artist Jennifer Ghormley are site-specific installations composed of suspended shapes numbering in the hundreds, reflecting patterns found in nature and collectively composing larger shapes. The artwork is designed to engage the viewer in a lighthearted sensory experience while instilling a sense of calm.

YOU'LL FIND JENNIFER'S WORK HANGING IN THE LOBBY OF THE HUB.



Homes with heart

We believe your home should be an expression of you. At Kinston, regional architectural styles are lovingly reimagined on a spectrum from classic to village modern. The plan is to offer a more thoughtful level of design and a greater variety than what you've come to expect these days. The results will be more visually interesting neighborhoods and utterly charming streetscapes.





Neighborhoods with style

Kinston's neighborhoods are designed with a refreshing mix of single-family, urban cottages and townhomes centered around parks and pocket parks—many with old-school front porches and garages accessed through alleyways. Now Kinston is proud to offer for-lease paired homes featuring their own exclusive amenities.



THANKS TO LOVELAND'S THRIVING CULTURAL SCENE

AND NORTHERN COLORADO'S EXCEPTIONAL QUALITY

OF LIFE, THE AREA HAS BECOME ONE OF THE STATE'S

MOST ATTRACTIVE DESTINATIONS. A GROWING LIST

OF INNOVATIVE COMPANIES HAVE SET UP SHOP,

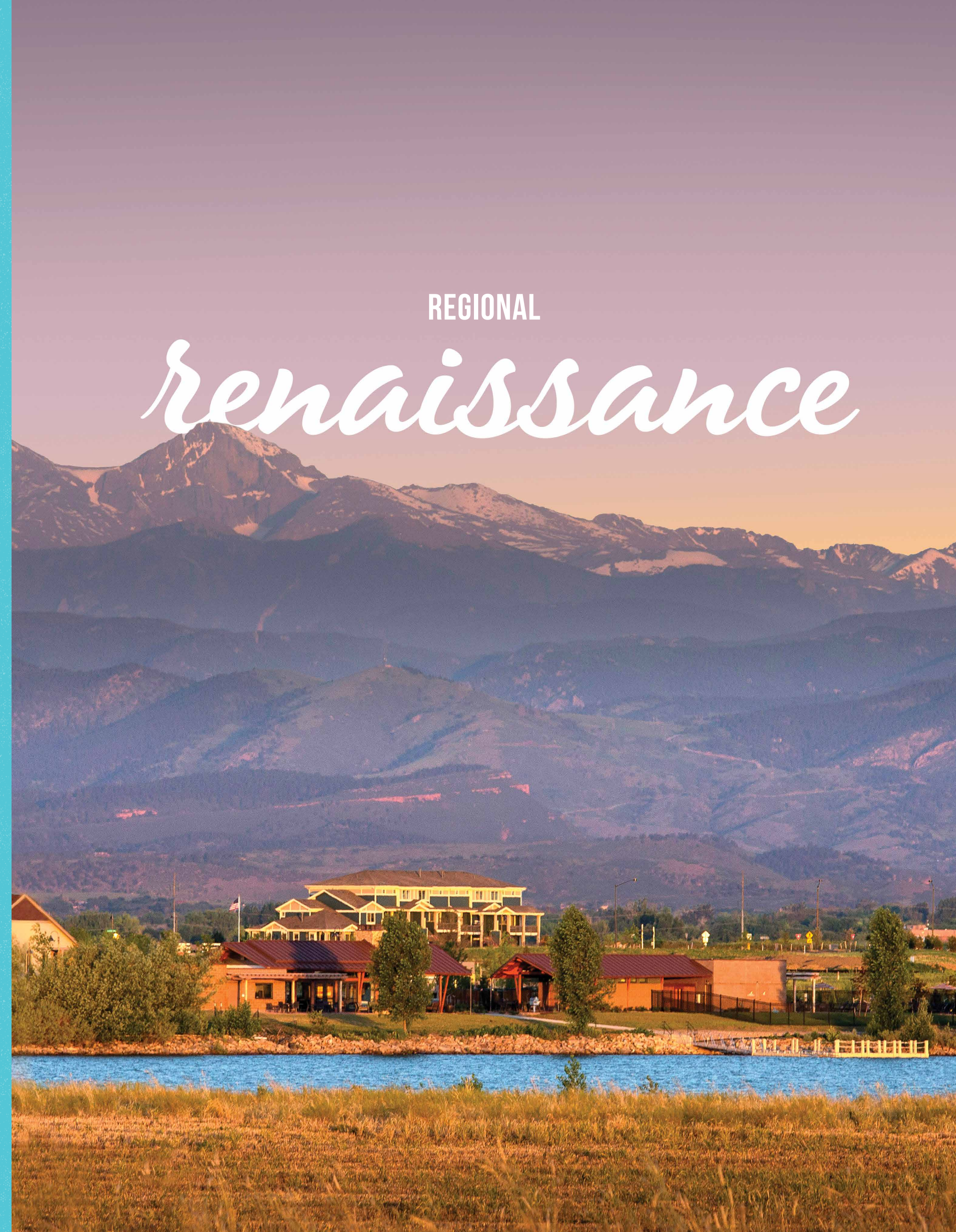
AND TWO NEARBY UNIVERSITIES PROVIDE ACADEMIC

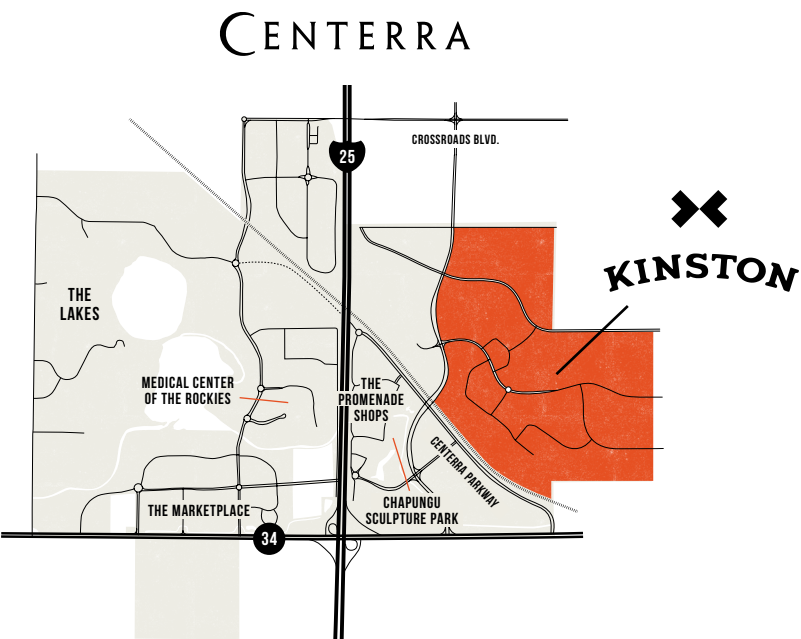
ENERGY. ALL WITHIN SWEEPING VIEWS OF

LONGS PEAK AND THE FRONT RANGE.

REGIONAL

renaissance





Map is not to scale and is intended for informational and illustrative purposes only. Plans, uses, zoning, amenities, features, availability, acreage, sizes, dates, vehicle counts, listed owners/tenants, and other elements are subject to change by McWhinney Real Estate Services, Inc. or its affiliates without notice, and shall not be relied upon. February 2024



1
TRAILS
Wind along with the trail
Soon, Kinston will be woven with a variety of creative parks, linked by over 14 miles of trails. It's a more connected lifestyle that calls you to go outside, explore nature, walk or bike to the Promenade Shops at Centerra for dinner with friends, and let the day take you where it will.



2
CHAPUNGU SCULPTURE PARK
Lose yourself in art
Just across Centerra Parkway from Kinston, 26-acre Chapungu Sculpture Park is known for its Zimbabwean art collection featuring more than 80 hand-carved stone sculptures. Plus, serene ponds, bird watching, walking trails, botanical flowers and landscaped gardens, natural habitat and a venue for events of all kinds.



3
KINSTON COMMONS
A place for everybody
Kinston Commons is our planned amenity campus. Where residents will come for a workout, to lounge by the pool, cool off at the splash pad and enjoy a concert on the event lawn. It's already home to Kinston Hub and the Hub Café, our bustling welcome center and neighborhood eatery. Best of all, it's just a short walk from home, anywhere in Kinston.

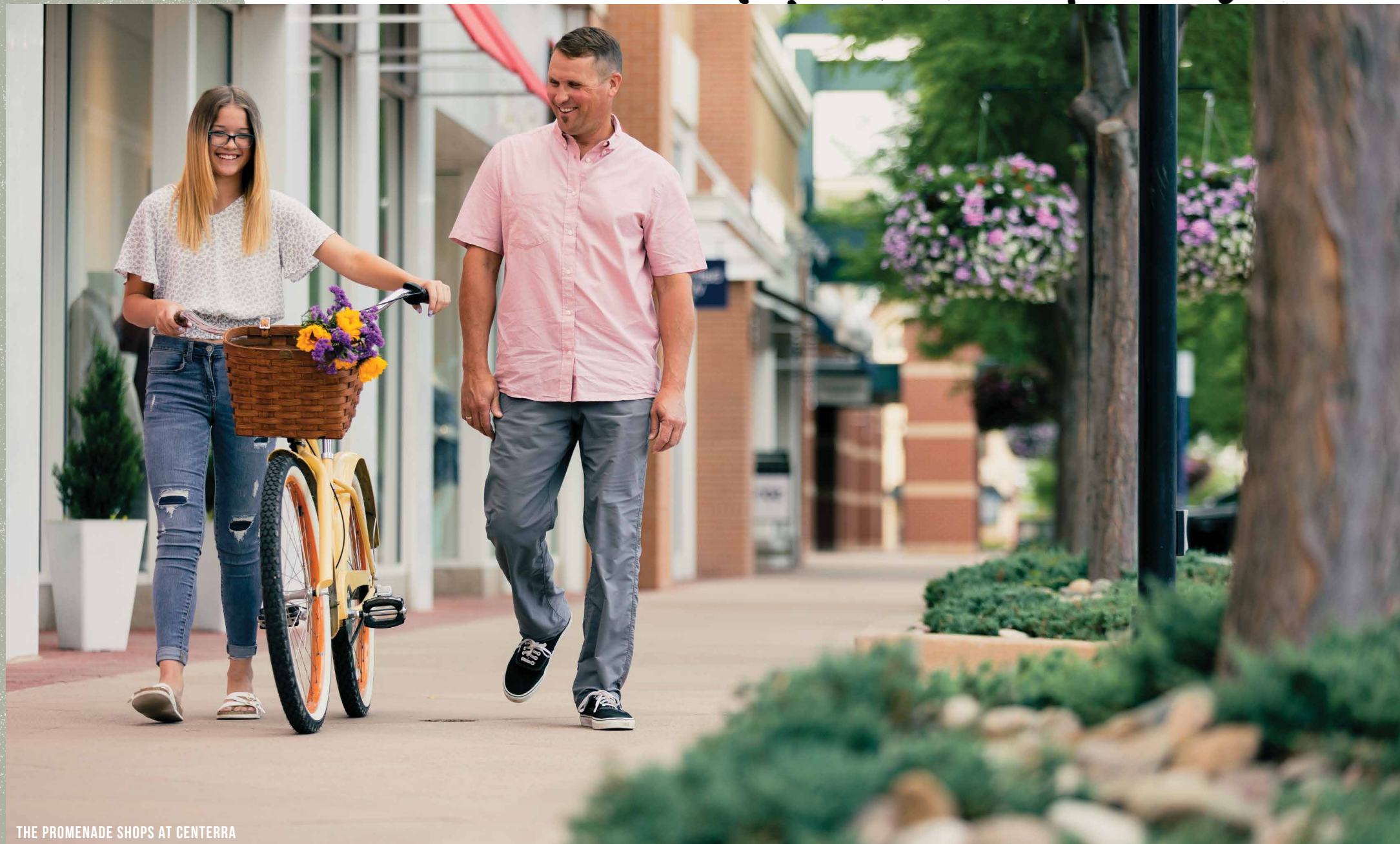


4
ROUNDTOP PARK
Kinston's living room
This signature greenspace is a welcoming place to gather. A place for friends to meet and enjoy spectacular Front Range views from Adirondack chairs at the top of a bluff. Below the bluff, kids play on a Colorado-style playground of natural timbers and rope bridges.



Saunter, revel, linger, savor...

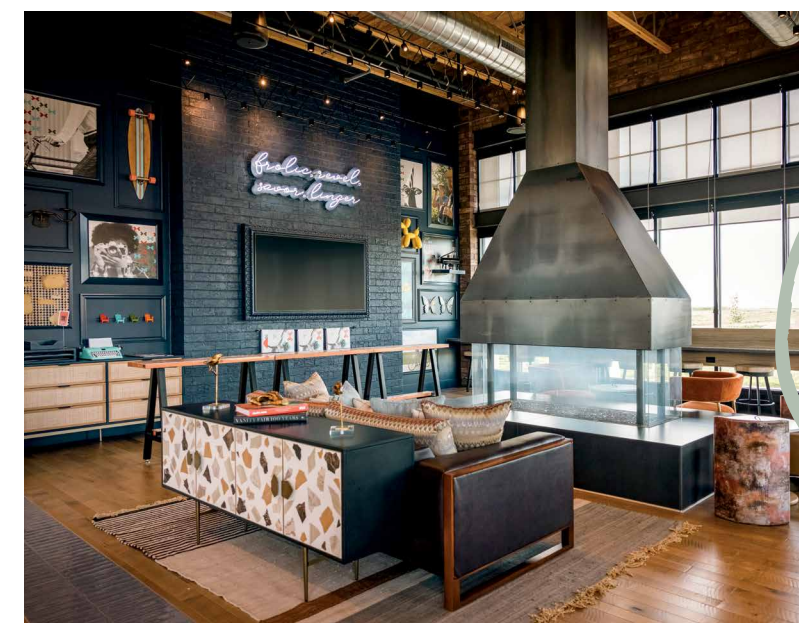
Life at Kinston means walking to The Promenade Shops at Centerra for dinner, drinks and cultural events. Nature-filled bike rides to Houts Reservoir, Equalizer Lake and the High Plains Environmental Center. And summer concerts at Chapungu Sculpture Park. Here, beautiful sights and wonderful sounds abound.

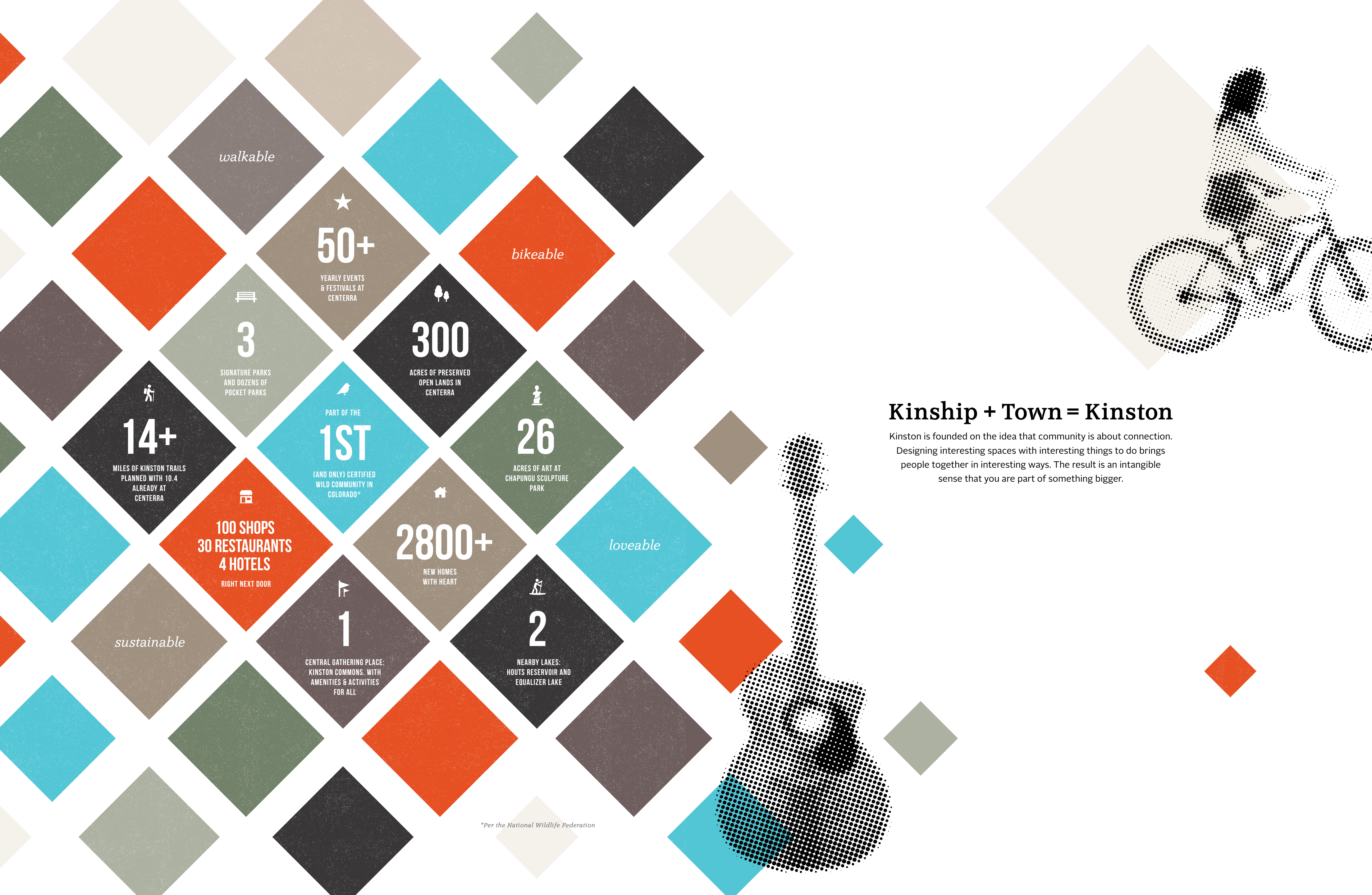




See you at The Hub

Kinston Hub, along with the Hub Café, is your right-in-the-neighborhood destination for breakfast, lunch, happy hour, dinner and just hanging with the neighbors. It's the site of community events and gatherings large and small. The perfect work-from-anywhere space. And it's Kinston's welcome center, where you start your search for a new home.





walkable

★
50+
YEARLY EVENTS
& FESTIVALS AT
CENTERRA

bikeable

🛏️
3
SIGNATURE PARKS
AND DOZENS OF
POCKET PARKS

🌲
300
ACRES OF PRESERVED
OPEN LANDS IN
CENTERRA

🚶
14+
MILES OF KINSTON TRAILS
PLANNED WITH 10.4
ALREADY AT
CENTERRA

🐦
1ST
PART OF THE
(AND ONLY) CERTIFIED
WILD COMMUNITY IN
COLORADO*

🗿
26
ACRES OF ART AT
CHAPUNGU SCULPTURE
PARK

🏪
**100 SHOPS
30 RESTAURANTS
4 HOTELS**
RIGHT NEXT DOOR

🏠
2800+
NEW HOMES
WITH HEART

loveable

sustainable

🚩
1
CENTRAL GATHERING PLACE:
KINSTON COMMONS. WITH
AMENITIES & ACTIVITIES
FOR ALL

🏊
2
NEARBY LAKES:
HOOTS RESERVOIR AND
EQUALIZER LAKE

Kinship + Town = Kinston

Kinston is founded on the idea that community is about connection. Designing interesting spaces with interesting things to do brings people together in interesting ways. The result is an intangible sense that you are part of something bigger.

*Per the National Wildlife Federation



A school for every kind of kid

Kinston kids have the opportunity to enroll in the Thompson School District, known for its collaborative culture and educating “the whole child” for life beyond the school walls. Its teachers, staff, parents, business and non-profit partners all work together, empowering students, putting them on the path towards college and career readiness. There are also lots of great private and charter schools for kids to opt into, because not all students learn the same.

NEW ON-SITE SCHOOL PLANNED

A site within Kinston has been set aside for a potential new school. So kids who live in Kinston can walk to school, learn and make new friends right here in the neighborhood.



MAY LIFE BE
eventful



AS KINSTON COMES INTO ITS OWN, EXPECT MANY

DELIGHTFUL THINGS TO DO AND PEOPLE TO SEE.

FROM SEASONAL CELEBRATIONS AND HAPPY

HOURS TO CONCERTS ON THE EVENT LAWN,

ORGANIZED BY KINSTON'S COMMUNITY LIFE AND

ENGAGEMENT TEAM. IN THE MEANTIME,

THERE'S PLENTY GOING ON AT CENTERRA.

February 2024. All information contained in this brochure is for general information purposes only and is subject to change by McWhinney Real Estate Services, Inc. or its affiliates without notice. The information and materials contained in this brochure regarding individual developments, including photographs, renderings, schedules, facilities, land uses, improvements, amenities, dimensions, specifications, availability and other elements, are proposed and conceptual only, subject to change, modification or cancellation without notice or obligation and shall not be relied upon. Illustrations may consist of artist renderings and photographs may show locations or activities not on, or related to, the property or development. Actual views may vary, and views described or depicted cannot be relied upon. Maps are not to scale and are for relative location purposes only. There is no guarantee that the facilities, services, features, amenities, improvements, views, scenes or specifications described, shown or depicted in this brochure will be constructed or otherwise provided, and if constructed or provided, that they will be of the same type, style, size or nature as described or depicted. Ownership or lease of a space in a depicted community or mixed use development does not guarantee access to, or the right to use, amenities, which, if available, may require separate payment and may be subject to other conditions on use. Any reproduction or use of this material without the written consent of McWhinney Real Estate Services, Inc. is prohibited.