





1  
SOURCE: CITY OF LOVELAND



2  
SOURCE: COLORADO PARKS AND WILDLIFE



3  
SOURCE: BUDWEISER EVENTS CENTER



5  
SOURCE: VISIT LOVELAND



6  
SOURCE: VISIT LOVELAND



7  
SOURCE: CITY OF LOVELAND



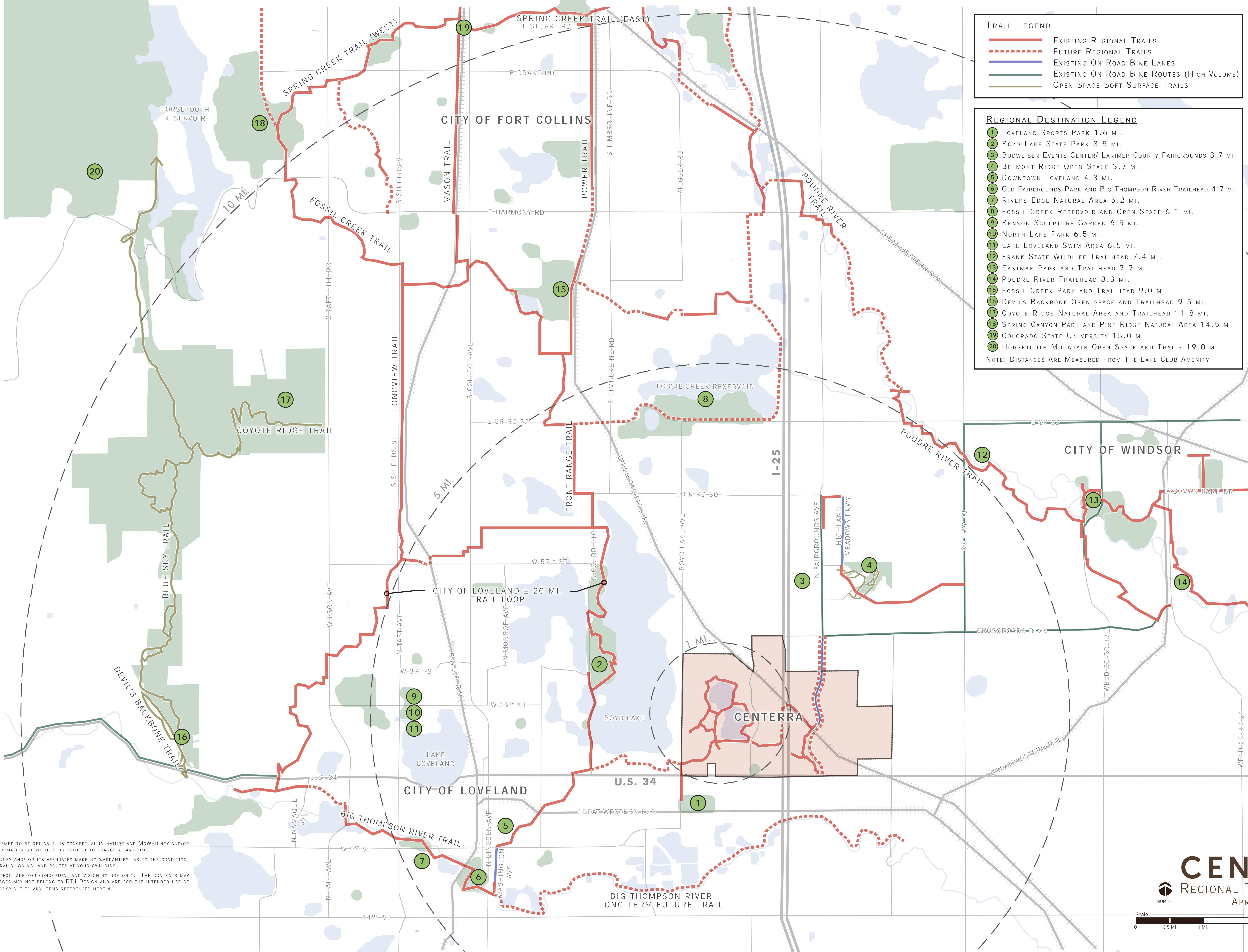
8  
SOURCE: LARIMER COUNTY

NOTE: THIS INFORMATION AND / OR ILLUSTRATION, ALTHOUGH DEEMED TO BE RELIABLE, IS CONCEPTUAL IN NATURE AND MCWHINNEY AND/OR ITS AFFILIATES MAKE NO WARRANTIES TO ITS ACCURACY. THE INFORMATION SHOWN HERE IS SUBJECT TO CHANGE AT ANY TIME.

TRAIL INFORMATION PROVIDED IS FOR REFERENCE ONLY. MCWHINNEY AND/ OR ITS AFFILIATES MAKE NO WARRANTIES AS TO THE CONDITION, SAFETY, DISTANCE, OR SUITABILITY OF THESE TRAILS. USE TRAILS, WALKS, AND ROUTES AT YOUR OWN RISK.

THE CONTENTS OF THIS MATERIAL, INCLUDING ALL IMAGES AND TEXT, ARE FOR CONCEPTUAL AND VISIONING USE ONLY. THE CONTENTS MAY NOT BE REPRODUCED, IN WHOLE OR IN PART, IN ANY FORM. IMAGES MAY NOT BELONG TO DTJ DESIGN AND ARE FOR THE INTENDED USE OF DISCUSSION PURPOSES ONLY. DTJ DESIGN MAY NOT OWN THE COPYRIGHT TO ANY ITEMS REFERENCED HEREIN.

REFERENCES:  
BASE MAP PROVIDED BY MERRICK ENGINEERING, 2018  
CITY OF LOVELAND REC TRAIL & BIKEWAYS MAP, 2017  
TOWN OF WINDSOR TRAIL MAP, 2014  
CITY OF FORT COLLINS BIKE MAP  
CITY OF FORT COLLINS TRAIL MAP  
LARIMER COUNTY PARKS, OPEN SPACES AND TRAILS MAP



TRAIL LEGEND	
	EXISTING REGIONAL TRAILS
	FUTURE REGIONAL TRAILS
	EXISTING ON ROAD BIKE LANES
	EXISTING ON ROAD BIKE ROUTES (HIGH VOLUME)
	OPEN SPACE SOFT SURFACE TRAILS

REGIONAL DESTINATION LEGEND	
1	LOVELAND SPORTS PARK 1.6 MI.
2	BOYD LAKE STATE PARK 3.5 MI.
3	BUDWEISER EVENTS CENTER/ LARIMER COUNTY FAIRGROUNDS 3.7 MI.
4	BELMONT RIDGE OPEN SPACE 3.7 MI.
5	DOWNTOWN LOVELAND 4.3 MI.
6	OLD FAIRGROUNDS PARK AND BIG THOMPSON RIVER TRAILHEAD 4.7 MI.
7	RIVERS EDGE NATURAL AREA 5.2 MI.
8	FOSSIL CREEK RESERVOIR AND OPEN SPACE 6.1 MI.
9	BENSON SCULPTURE GARDEN 6.5 MI.
10	NORTH LAKE PARK 6.5 MI.
11	LAKE LOVELAND SWIM AREA 6.5 MI.
12	FRANK STATE WILDLIFE TRAILHEAD 7.4 MI.
13	EASTMAN PARK AND TRAILHEAD 7.7 MI.
14	POUDRE RIVER TRAILHEAD 8.3 MI.
15	FOSSIL CREEK PARK AND TRAILHEAD 9.0 MI.
16	DEVILS BACKBONE OPEN SPACE AND TRAILHEAD 9.5 MI.
17	COYOTE RIDGE NATURAL AREA AND TRAILHEAD 11.8 MI.
18	SPRING CANYON PARK AND PINE RIDGE NATURAL AREA 14.5 MI.
19	COLORADO STATE UNIVERSITY 15.0 MI.
20	HORSETOOTH MOUNTAIN OPEN SPACE AND TRAILS 19.0 MI.
NOTE: DISTANCES ARE MEASURED FROM THE LAKE CLUB AMENITY	



9  
SOURCE: VISIT LOVELAND



10  
SOURCE: CITY OF LOVELAND



11  
SOURCE: CITY OF LOVELAND



12  
SOURCE: POUDETRAIL.ORG



16  
SOURCE: CITY OF LOVELAND



15  
SOURCE: COLORADO STATE UNIVERSITY



20  
SOURCE: LARIMER COUNTY

**CENTERRA**  
REGIONAL TRAIL CONNECTIONS  
APRIL 29, 2019

